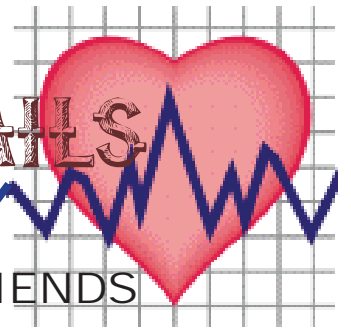


TREK TEN TRAILS

The Nature of Health



Hilochee WMA

Parking Area GPS Coordinates: N 28° 12.894 W 081° 39.489 (RT Osprey Trail 1.5 Miles)

DRIVING DIRECTIONS

From the intersection of Interstate 4 & U.S. 27 follow signs for US-27 South and merge onto US-27 South. Travel about 0.8 mile and turn right at traffic light onto Homerun Blvd. Follow Homerun Blvd. until it dead-ends into the grassy parking area.



The Osprey Unit has no Daily-Use Fee

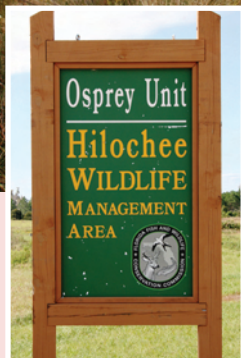
Website for hunt dates:

<http://myfwc.com/viewing/recreation/wmas/lead/hilochee/when-to-visit>



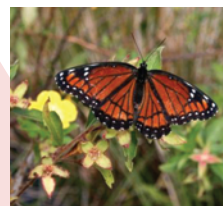
Photo Courtesy of Reinier Munguia

ATTRIBUTES



Hilochee WMA The Osprey Unit of the Hilochee Wildlife Management Area straddles I-4 in Polk County between C.R. 557 and U.S. 27. Hilochee is within the Green Swamp, a critical hydrologic resource, encompassing the headwaters of the Withlacoochee, Little Withlacoochee, Ocklawaha, Hillsborough and Peace rivers and serving as a major recharge area for the Floridan aquifer. This 6,093-acre property is open for wildlife viewing, hiking, bicycling, horseback riding and hunting. Hiking, biking and horseback riding is best on non-hunting days in the fall through the spring.

Things to See



Hilochee has good habitat for butterflies whose numbers peak in the fall. The best time to observe butterflies is between around 10:30 in the morning and 3:00 in the afternoon.



SCRAPBOOKERS: Place your souvenir stamp in this circle!



TREK TEN CACHE COORDINATES: N 28° 12.784 W 081° 40.102



FIND THE CACHE WITHOUT GPS: Park at the end of Homerun Boulevard. Enter thru the walk thru and follow the two track trail, the two track will bend to the right and then to the left under the power lines and then straighten out. Continue walking until you reach a stand of pine trees on the left side of the trail, continue to the end of this tree line and turn left. You will see a sign that reads "Road Closed to Vehicles" turn left again, look for the geocache at the end of the tree at the base of an oak tree.

www.friendsoftheparks.net