

Gator Creek Reserve



www.friendsoftheparks.net

GPS Coordinates:

N 28° 10.707 W 081° 59.153

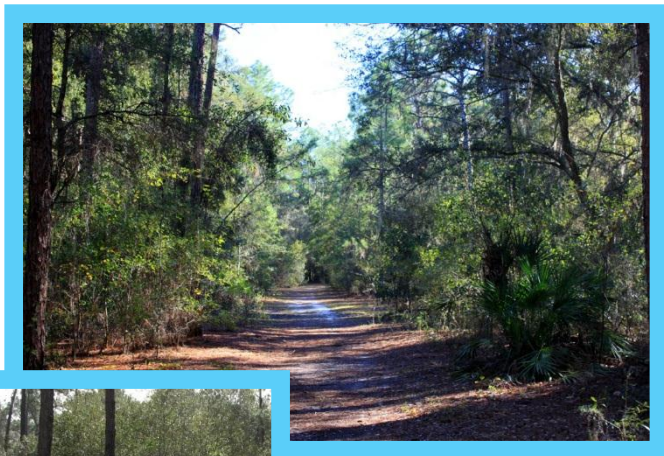


SCRAPBOOKERS:

Place your souvenir stamp in this circle!

DRIVING DIRECTIONS

From 1-4 east or west, exit at US Hwy. 98 north (Exit 32) and continue north for 6.7 miles. The entrance to Gator Creek Reserve is on the right.



THINGS TO SEE

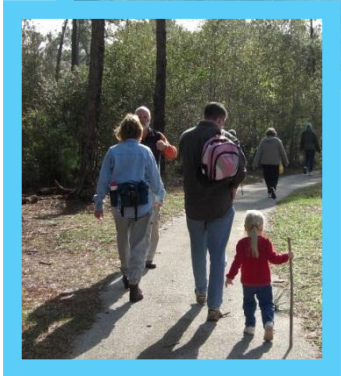
Wildlife that may be observed includes deer, turkey, fox, squirrels, and gopher tortoises. If you come across a deer track in the wet sand or mud, look for the dew claws – they will show up along with the hooves in the substrate.

FIND THE CACHE WITHOUT GPS:

From parking area follow the Piney Loop Trail, after crossing Gator Creek continue walking to trail sign number 9. About 600 feet past the trail sign look for a pine tree growing along the south side of the trail, about 20 feet past the pine you will see a tree missing its top. The geocache is at the base. (2 mile round trip)

TREK TEN CACHE COORDINATES:

N 28° 10.948 W 081° 58.322



Gator Creek Reserve

located in the Green Swamp Area of Critical State Concern. Gator Creek Reserve lets you experience a mosaic of cypress swamps, hardwood forests and marshes interspersed with slightly elevated areas including pine flatwoods. With a series of adjoining loop trails, one of which is paved, this 2,700-acre reserve offers easy short walks or longer treks through several unique habitats.

